



**READY TO DRILL
READY TO DISCOVER**



**TSX-V: KNG
OTCQB: KNGRF**



Las Coloradas, Chihuahua, Mexico

Mar 2025



THIS MANAGEMENT PRESENTATION (THE "PRESENTATION") WAS PREPARED AS A SUMMARY OVERVIEW ONLY OF THE CURRENT AFFAIRS OF KINGSMEN RESOURCES LTD." KINGSMEN" OR THE "COMPANY") AND WAS NOT PREPARED FOR THE PURPOSE OF ASSISTING PROSPECTIVE INVESTORS IN MAKING A DECISION TO INVEST IN KINGSMEN. KINGSMEN DOES NOT MAKE ANY REPRESENTATION AS TO THE COMPLETENESS, TRUTH OR ACCURACY OF THE INFORMATION CONTAINED IN THIS PRESENTATION. THE COMPANY EXPRESSLY WARNS READERS NOT TO RELY ON THE INFORMATION HEREIN FOR INVESTMENT OR OTHER RELATED PURPOSES. ACCORDINGLY, ANY USE OF THIS INFORMATION IS AT YOUR RISK AND WITHOUT LIABILITY TO THE COMPANY. THE INFORMATION CONTAINED HEREIN IS NOT AND SHOULD NOT BE CONSTRUED AS EITHER A PUBLIC OR PRIVATE OFFER OR SOLICITATION TO PURCHASE SECURITIES IN THE CAPITAL STOCK OF KINGSMEN. THE READER IS REFERRED TO HIS/HER PROFESSIONAL INVESTMENT ADVISOR REGARDING INVESTMENT RELATED DECISIONS RESPECTING THE SECURITIES OF THE COMPANY.

FORWARD-LOOKING INFORMATION

CERTAIN DISCLOSURE CONTAINED IN THIS NEWS RELEASE MAY CONSTITUTE FORWARD-LOOKING INFORMATION OR FORWARD-LOOKING STATEMENTS, WITHIN THE MEANING OF CANADIAN SECURITIES LAWS. THESE STATEMENTS MAY RELATE TO THIS NEWS RELEASE AND OTHER MATTERS IDENTIFIED IN THE COMPANY'S PUBLIC FILINGS. IN MAKING THE FORWARD-LOOKING STATEMENTS THE COMPANY HAS APPLIED CERTAIN FACTORS AND ASSUMPTIONS THAT ARE BASED ON THE COMPANY'S CURRENT BELIEFS AS WELL AS ASSUMPTIONS MADE BY AND INFORMATION CURRENTLY AVAILABLE TO THE COMPANY. THESE STATEMENTS ADDRESS FUTURE EVENTS AND CONDITIONS AND, AS SUCH, INVOLVE KNOWN AND UNKNOWN RISKS, UNCERTAINTIES AND OTHER FACTORS WHICH MAY CAUSE THE ACTUAL RESULTS, PERFORMANCE OR ACHIEVEMENTS TO BE MATERIALLY DIFFERENT FROM ANY FUTURE RESULTS, PERFORMANCE OR ACHIEVEMENTS EXPRESSED OR IMPLIED BY THE STATEMENTS. THESE RISKS AND UNCERTAINTIES INCLUDE BUT ARE NOT LIMITED TO: THE POLITICAL ENVIRONMENT IN WHICH THE COMPANY OPERATES CONTINUING TO SUPPORT THE DEVELOPMENT AND OPERATION OF MINING PROJECTS; THE THREAT ASSOCIATED WITH OUTBREAKS OF VIRUSES AND INFECTIOUS DISEASES; RISKS RELATED TO NEGATIVE PUBLICITY WITH RESPECT TO THE COMPANY OR THE MINING INDUSTRY IN GENERAL; PLANNED WORK PROGRAMS; PERMITTING; AND COMMUNITY RELATIONS. READERS ARE CAUTIONED NOT TO PLACE UNDUE RELIANCE ON FORWARD-LOOKING STATEMENTS. THE COMPANY DOES NOT INTEND, AND EXPRESSLY DISCLAIMS ANY INTENTION OR OBLIGATION TO, UPDATE OR REVISE ANY FORWARD-LOOKING STATEMENTS WHETHER AS A RESULT OF NEW INFORMATION, FUTURE EVENTS OR OTHERWISE, EXCEPT AS REQUIRED BY LAW.

QUALIFIED PERSON

THE QUALIFIED PERSON FOR KINGSMEN PROJECTS, KIERAN DOWNES, PH.D.,P.GEO, DIRECTOR OF KINGSMEN AND A QUALIFIED PERSON AS DEFINED BY NATIONAL INSTRUMENT 43-101, HAS REVIEWED AND VERIFIED THE CONTENTS OF THIS PRESENTATION.

LOCATED IN THE HEART OF MEXICO'S SILVER BELT

Las Coloradas Project Milestones to Date

- Mexico, Parral field reconnaissance Fall 2022.
- Area consolidation and acquisition 2023.
- GIS database built through data acquisition: mapping, sampling, geophysics, and **drill program permitted**.
- Drill Targets selected.

Near Term Discovery Potential

Exciting mineralization and targets

- Soledad mine area.
- Soledad I structure & vein system.
- Soledad II structure & vein system.
- Saddle Target.
- La Plata zone.

Significant District Scale Potential

Neighbouring Operating Mines - Exploration Model

- Santa Barbara, San Francisco del Oro, and Los Gatos



THE BEST PLACE TO FIND A MINE IS WHERE THERE WAS ONE

Chihuahua State, Mexico

Quick USGS Facts ²

708 records of mining mines in Chihuahua.

9 records of prospects.

556 records of mineral occurrences of observable ore mineralization.

3 records of mining plants.

140 records of mineral producers.

Top Commodities in Chihuahua

1. Silver (685)
2. Lead (442)
3. Gold (408)
4. Zinc (267)
5. Copper (249)



Note 1: Kingsmen Company presentation/reports
Note 2: Chihuahua information provided by thediggings.com

MINING FRIENDLY JURISDICTION

Chihuahua State, Mexico

- 450 year mining history.
- 3rd largest silver producing state in Mexico.

Las Coloradas Project

- Located 38 kms from mining town of Parral.



UNTAPPED EXPLORATION POTENTIAL



MINING FRIENDLY JURISDICTION

Chihuahua, Parral,
Mexico



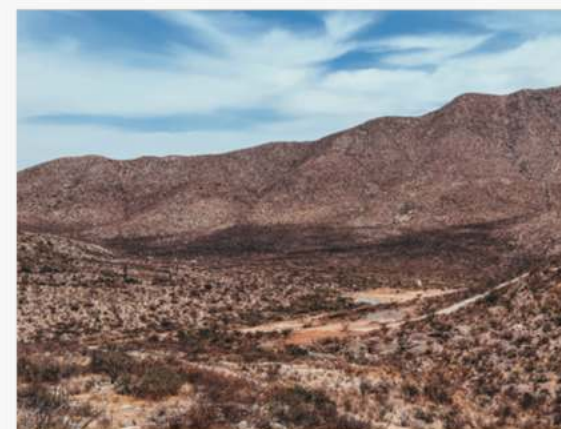
HISTORICAL MINING ACTIVITY

Las Coloradas
Operated 1944-1952



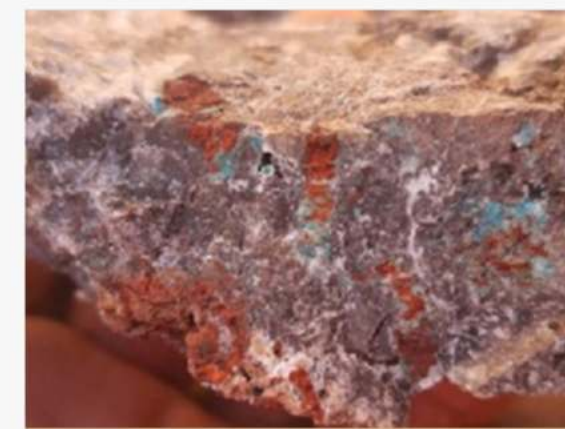
DISTRICT SCALE POTENTIAL

Consolidation of 15
mining claims



INFRASTRUCTURE

Paved and Gravel Road
access, on power grid,
available water



NOT PREVIOUSLY EXPLORED BY A JUNIOR



100% OWNERSHIP

Staged over 7 years-
\$2.1 Million USD
Purchase price

LAS COLORADAS LOCATION



WHERE IS IT?

38 Km from Parral City, Chihuahua Mexico.

INFRASTRUCTURE

Paved and gravel road access, on power grid, readily available water, labour and services in Parral.

TYPE OF PROJECT

Underground epithermal, high-grade, vein, silver-gold-lead-zinc-copper project, skarn, porphyry.

LAND CONSOLIDATION

Kingsmen has successfully consolidated the fragmented ownership in a historic brownfield mining district.

SKILLED LABOUR

Local skilled labour force from Parral.

PERMITS

Surface rights agreement, access and drilling permit completed.

SIZE AND SCOPE

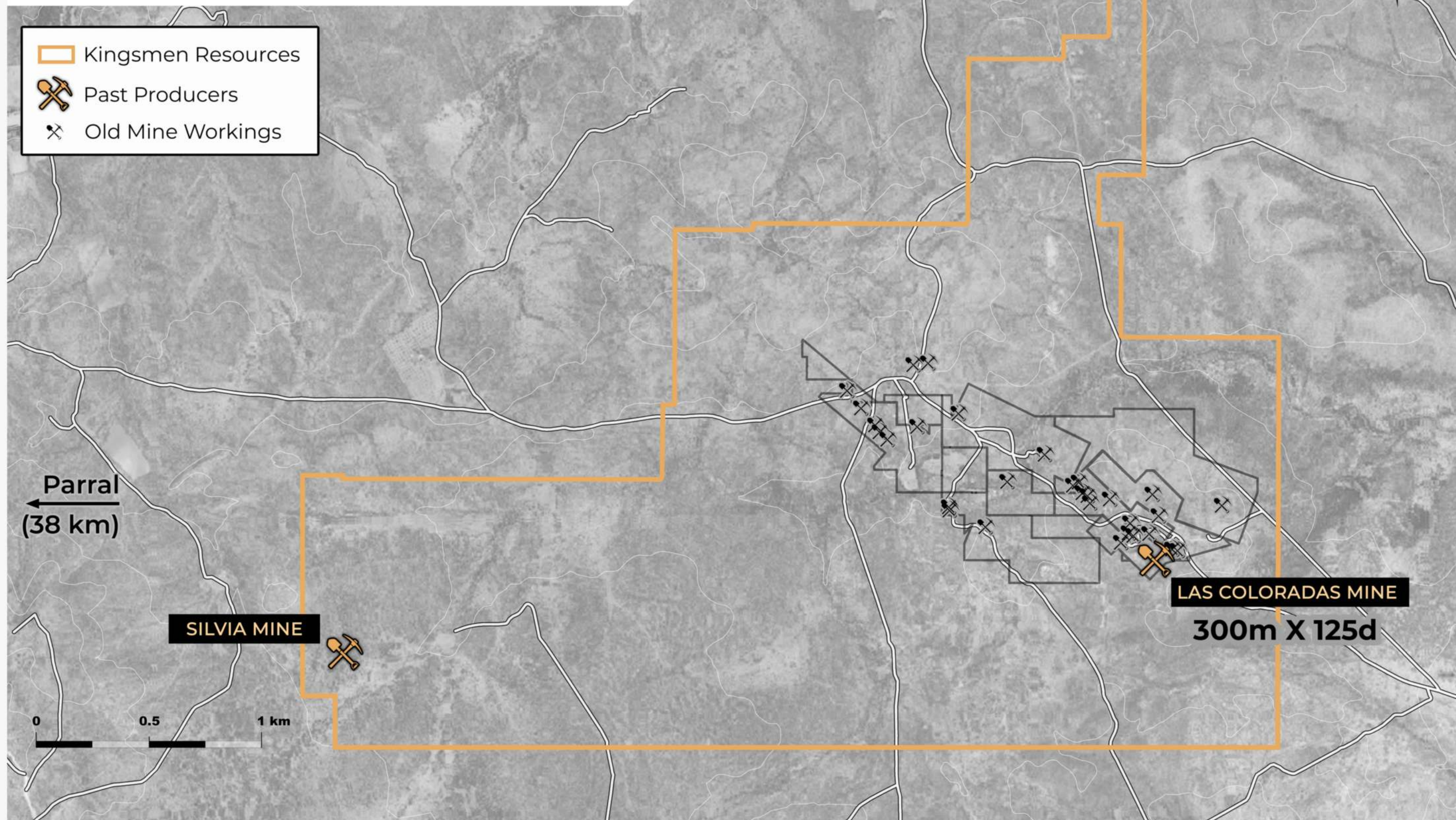
The project consolidates fifteen mining concessions. Access agreements have been signed with the two farms that have the surface rights, for a period of five years.

PRO-MINING JURISDICTION

Local communities are fully supportive of mining.

KINGSMEN RESOURCES LAS COLORADAS DISTRICT PROJECT CHIHUAHUA, MEXICO

100% OWNERSHIP



REPORTED UNDERGROUND HISTORIC MINING GRADES

Historic mining by ASARCO in the Las Coloradas project area was conducted between 1944 - 1952

300 - 518 g/t
SILVER

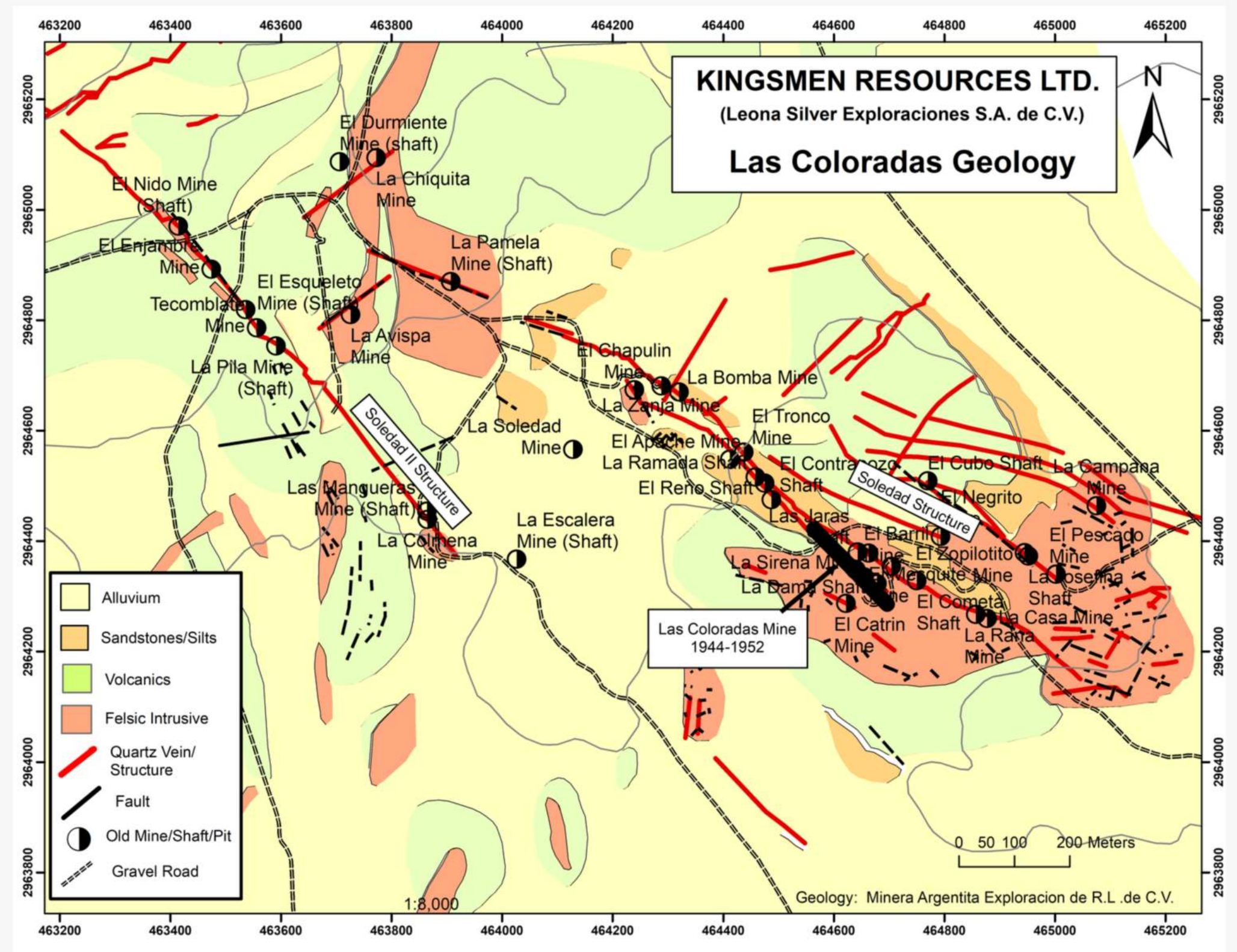
0.6 - 0.8 g/t
GOLD

6.2 - 10.9%
LEAD

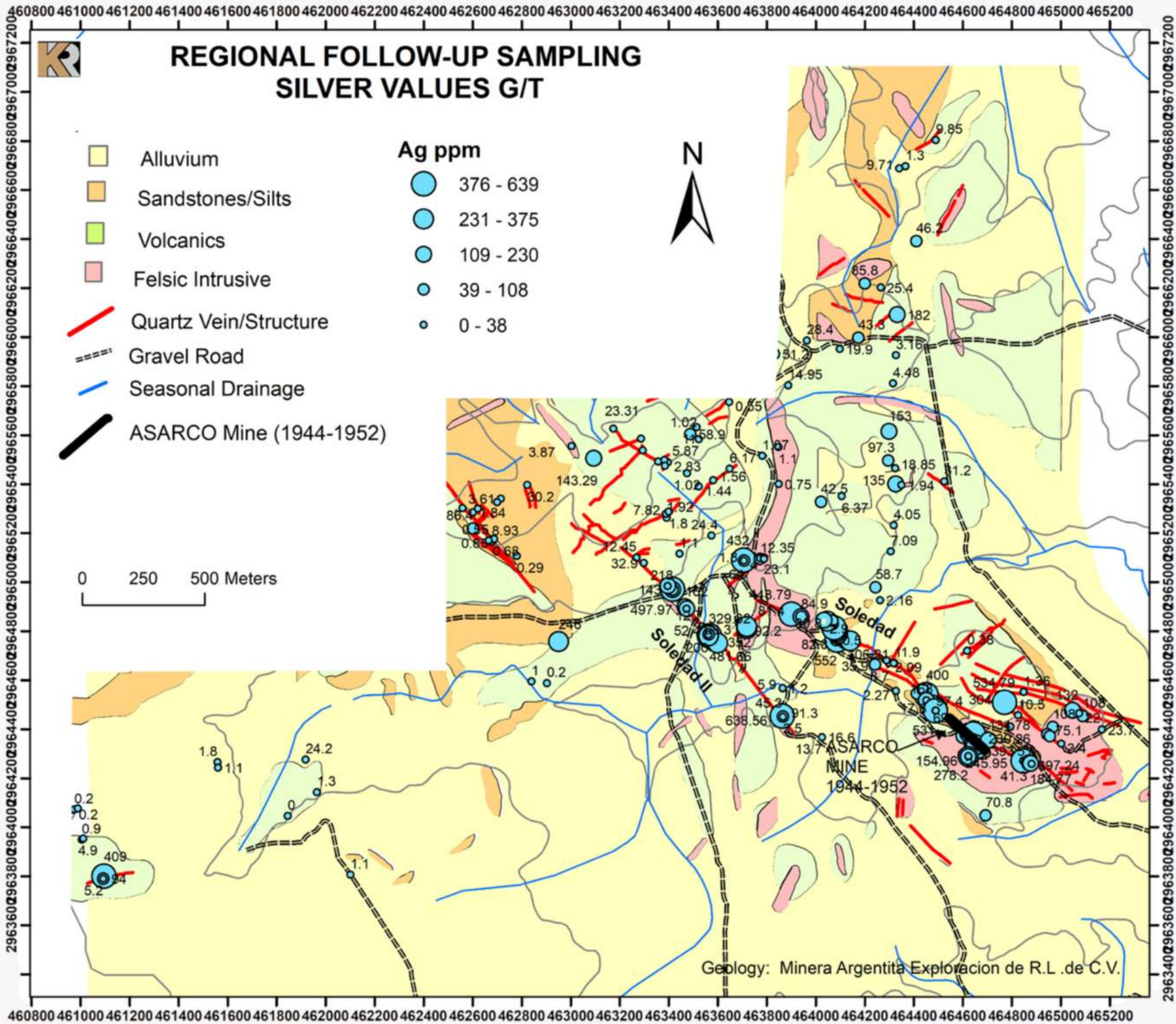
6.5 - 10.3 %
ZINC

MINERALIZATION AND STRUCTURAL CONTROL(S)

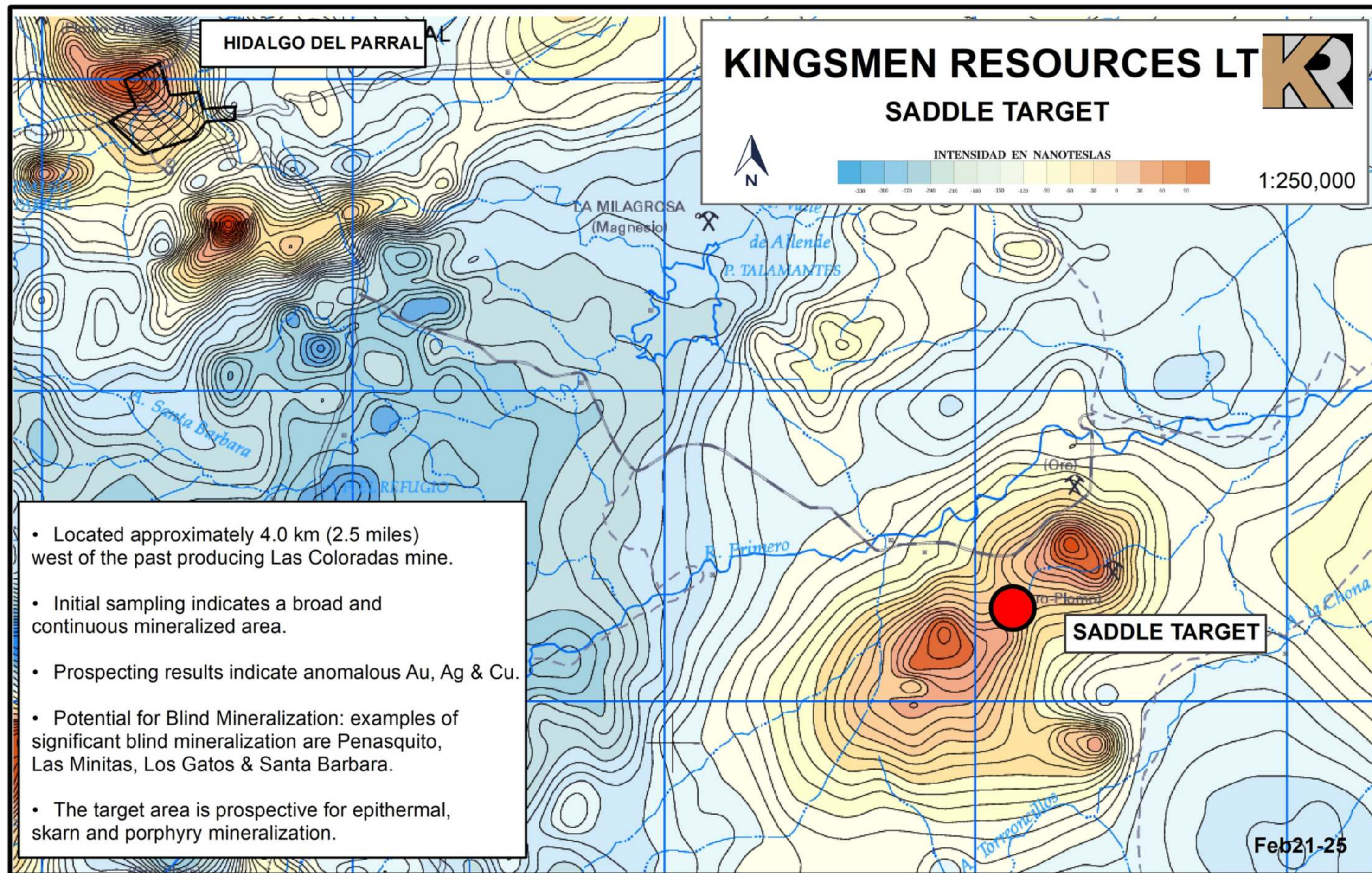
- Shallow, high-grade, silver-gold-lead-zinc-copper quartz-calcite veins.
- Structures cut all rock types.
- Mineralized structures have not been explored to depth or along strike.



REGIONAL SAMPLING SILVER VALUES: G/T



HIGHLIGHTING NEW DISCOVERY POTENTIAL



EXPLORATION WORK COMPLETED

- Property-wide sampling & mapping completed.
- Geophysics on the claims.
- Total ground magnetic coverage.
- Large database created.
- IP/R, detailed magnetics, multi-parameter deep geophysical surveys.
- Drilling targets identified.

FUTURE GROWTH TARGETS

- 3,000 - 8,000 meter drill program.



KEY POINTS

First junior mining company to consolidate/explore this historic brownfield district.

Limited mining activity has occurred in the area due to the previous fragmented ownership.

Seven year option to earn 100%, no significant payments until year 5, total purchase USD\$2,140,000.

Similar geology to the Parral mining district where vein mineralization persists to depths of 600 – 1,000 meters.

Undrilled below water table and along strike.

FUTURE PROGRAMS AT LAS COLORADAS PROJECT

PHASE

1

Initial drilling at Las Coloradas.

PHASE

2

Data compilation & review/new target definition.

PHASE

3

Expansion and resource definition drilling.

LAS COLORADAS OPPORTUNITY

- Target potential would be over 200 million oz of equivalent silver today based on current data.
- 120 million oz of silver; 350,000 oz of gold; 2.0 billion pounds of zinc; and 1 billion pounds of lead.
- Newly discovered saddle target could significantly increase the +200 million oz target.

**CHIHUAHUA IS A STATE WITH A 450 YEAR
MINING HISTORY.
RANKED 3RD IN NATIONAL MINING
PRODUCTION.**



*potential quantity and grade conceptual in nature

BOARD OF DIRECTORS



Scott Emerson

President, CEO & Director

- ▶ Has worked with several publicly traded companies in the resource and technology sectors.
- ▶ Roles have included senior management positions and directorships.
- ▶ Involved with International Mahogany (Jolu Mine), Founding President of Golden Peaks Resources (18 yrs) with a successful exit.



Nick Demare

CFO & Director

- ▶ President of Chase since 1991.
- ▶ Serves as an officer and/or director of several public companies listed on the Toronto and TSX Venture exchanges.
- ▶ A member in good standing with the Institute of Chartered Professional Accountants of British Columbia.



Rodney B. Johnston

Director

- ▶ Served 35 years (25 as a partner) at Pricewaterhouse Coopers LLP.
- ▶ Previously the President and CEO of a private REIT investing in U.S. commercial real estate.
- ▶ Has extensive experience in advising mining companies.



Kieran Downes

Director

- ▶ Professional Geologist with over 40 years of diversified experience in gold, base metals, uranium and diamond exploration.
- ▶ Holds a B.Sc. (Hons.) in Geology from University College Galway (1971) and a Ph.D. in Geology from Dublin University.
- ▶ A Registered Professional Geologist in British Columbia.



Carlos Garza

Director

- ▶ Industrial and Systems Engineer.
- ▶ Principal in a mining consulting company and involved in numerous exploration projects in Mexico.
- ▶ Directly involved in production, processing, and commercialization of minerals.



Mark J. Pryor

Director

- ▶ Distinguished geologist with a 40-year track record.
- ▶ Has played a key role in the development of several brownfield projects in Mexico.
- ▶ Extensive career includes roles with major mining companies such as Electrum Group, Anglo American, Placer Dome, and Antofagasta Minerals.



TSX VENTURE EXCHANGE OTCQB:	KNK KNGRF
Shares Outstanding	23,016,412
Working Capital	\$1.2 Million
No Debt	
Warrants: 4 million at \$.40, expire Nov 2026	
Options: 1,650,000 exercisable at \$.36	
Fully Diluted	28,666,412
1% NSR on the La Trini property, part of the Los Ricos North silver/gold project in Mexico, operated by GoGold Resources.	
Data as of February 23, 2025	

CAPITAL STRUCTURE



DRILL BIT DRIVES VALUE

Corporate Office

Kingsmen Resources Ltd.
1090 W Georgia St #1305,
Vancouver, BC V6E 3V7

www.kingsmenresources.com
info@kingsmenresources.com
604-603-0074